

# Technical Data

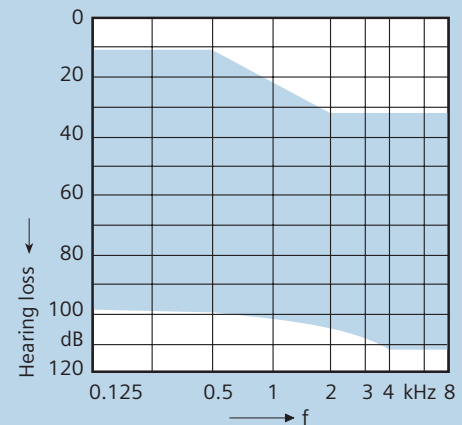
## ARTIS P, P e2e BTEs

### Premium Features

- Digital 12-channel amplifier
- Programmable BTE instruments
- Available as standard and as e2e wireless™ version
- For moderate to severe hearing losses
- ARTIS P e2e - optimized solution for binaural fitting
- High performance directional microphone (TwinMic™), automatic and multi-channel adaptive operation
- High speed automatic feedback cancellation
- Adaptive noise reduction in 12 channels
- Professional and efficient fitting with the workflow oriented CONNEXX™ software

### Standard Features

- e2e wireless technology (ARTIS P e2e only)
- Nanocoated housings
- Telephone coil with AutoPhone™
- Audio input and compatibility with FM systems
- Volume control
- Battery compartment with lock and ON/OFF switch
- Push button for program selection with alerting tones for program change
- Programmable ON/OFF function for push button
- Four individual hearing programs for microphone, audio shoe and telecoil mode
- Battery type 13
- Alerting tones for low battery power



### Options

- Available in the following colors: beige, brown, grey, granite, silver, black, transparent and translucent fun colors: purple, green, blue, orange, and pink
- ePocket™, bi-directional remote control with read out function (for ARTIS e2e only)
- Audio shoe
- Small earhook
- Eyeglass adapter
- Materials to support pediatric fittings (use and care kit, storybooks, and more)

# ARTIS P, P e2e BTE Technical Data

		2cc coupler
<b>Output Sound Pressure Level</b>	Peak	131 dB
	HF-Average OSPL 90	127 dB
<b>Gain (Input 50 dB)</b>	Peak	70 dB
	HF-Average	62 dB
	Reference test gain	50 dB
<b>Frequency Range</b>	Low frequency limit	<100 Hz
	High frequency limit	7100 Hz
<b>Total Harmonic Distortion</b>	500 Hz	2%
	800 Hz	1%
	1600 Hz	1%
<b>Equivalent Input Noise</b>		16 dB
<b>Induction Coil Sensitivity</b>	HFA SPLITS* (left/right)	107/111 dB
	STS** (left/right)	-3/1 dB
<b>AGC-O (CK = -21 dB)</b>	Attack time	5 ms
	Release time	100 ms
<b>Battery</b>	Type	13 cell zinc-air
	Voltage	1.3 v
	Current Drain	1 mA
	Typical Life	~220 h

Technical information for e2e wireless function: Operating frequencies:  $f_{\text{low}} = 115 \text{ kHz}$ ,  $f_{\text{high}} = 120 \text{ kHz}$ ; Rated H-field strength (maximum):  $-11.5 \mu\text{A/m}$  at 3 meters.

\* SPLITS = Coupler SPL for an Inductive Telephone Simulator

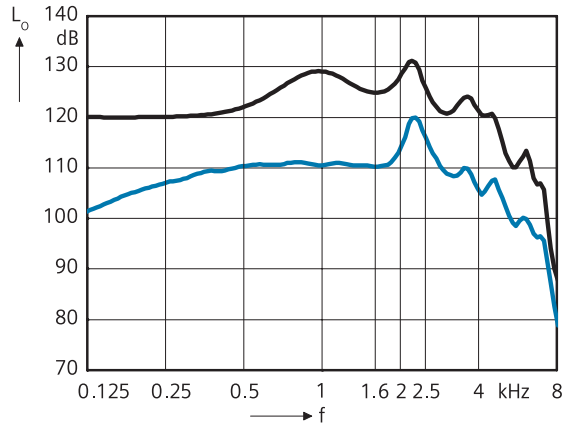
\*\*STS = Simulated Telephone Sensitivity

Measure instructions: Instrument in linear setting. Input signal: Sinus Burst; Frequency: 2500 Hz; Low Level: 33 dB; High Level: 60 dB; Interval: 250 ms; On; Time: 125 ms.

# ARTIS P, P e2e BTE Basic Data

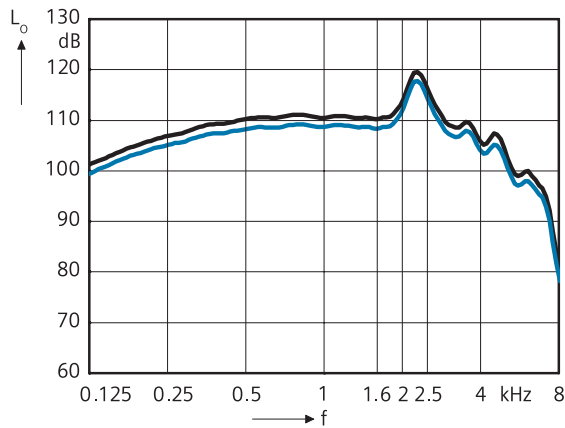
Output Sound Pressure Level ( $L_1=90$  dB)  
Maximum Gain ( $L_1=50$  dB)

IEC 118-7/A1; ANSI S3.22-2003



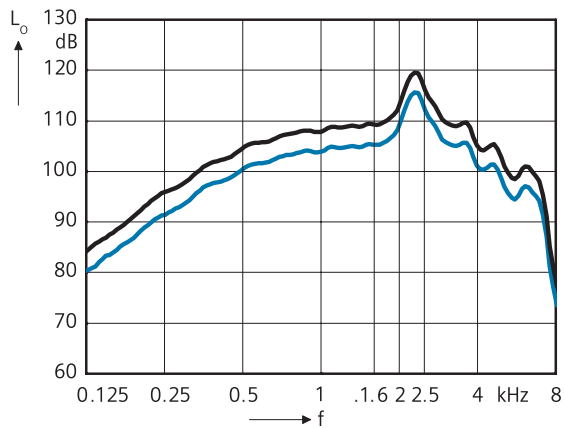
Basic Acoustic Response ( $L_1=60$  dB)  
Frequency Response ( $L_1=60$  dB)

IEC 118-7/A1; ANSI S3.22-2003



Inductive Response right  
Inductive Response left

ANSI S3.22-2003

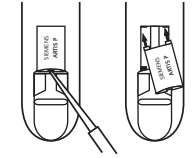


# ARTIS P, P e2e BTE Fitting Information



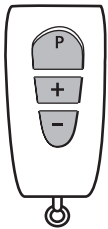
## Programming Socket

The programming socket lies under a flap below the program button. Use a suitable tool to open the flap. After the programming procedure is complete, close the flap using your fingernail.



## Changing the Typeplates

To mark the left and right side of the ARTIS P and P e2e instruments when fitting binaurally, exchange the housing colored typeplates on the inner curve of the instruments for blue (left) and red (right). Use a suitable tool to lift and remove the typeplate. Lock the two pins on the new typeplate into the openings and press gently into position with your finger.

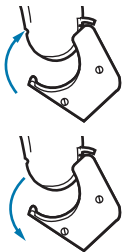


## ePocket™

The ARTIS P e2e hearing system supports the use of ePocket™, a bi-directional remote control with read out function.

ePocket can change the hearing programs and the volume of ARTIS e2e. The ePocket read out function will display the current program, volume level and battery status of the instrument(s).

ePocket includes a cover and clip.



## Audio Shoe

To attach an audio shoe to ARTIS P and P e2e, open the battery compartment to the first stop. Open the flap under the programming socket and hook the audio shoe in from the front. Press the audio shoe into place so that it attaches to the back and the curve of the audio shoe presses against the bottom of the hearing system.

To remove the audio shoe, pull it toward the front. Then unhook the audio shoe and close the flap.



## Earhook, small

For optimal fitting to smaller ears, a small earhook is an available option.



## Pediatric Accessories

A Use and Care kit containing items to care for hearing instruments (blower, stethoscope, drying kit, and more) and a teddy bear wearing hearing instruments packed into a colorful lunchbox; storybooks for children about hearing loss, and other materials are available to support pediatric fittings. For more information or to order pediatric materials, contact your Siemens Sales Representative.

## **Siemens Hearing Instruments, Inc. locations**

### **United States Headquarters/Northeast Manufacturing Facility:**

10 Constitution Avenue, P.O. Box 1397, Piscataway, NJ 08855-1397 • (732) 562-6600 or (800) 766-4500

**Midwest Manufacturing Facility:** (847) 808-1200 or (800) 333-9083

**West Manufacturing Facility:** (562) 404-4531 or (800) 998-9787

**Technical Support for Software and Systems:** (888) 231-1333

[www.usa.siemens.com/hearing](http://www.usa.siemens.com/hearing)

### **Siemens Hearing Instruments A Division of Siemens Canada Limited**

320 Pinebush Road, Cambridge, Ontario, Canada N1T 1Z6 • (519) 622-5200 or (800) 663-0620

Information in this brochure subject to change without notice. © 2006 Siemens Hearing Instruments, Inc. All rights reserved