

Technical Data

ARTIS™ 2 Life BTE

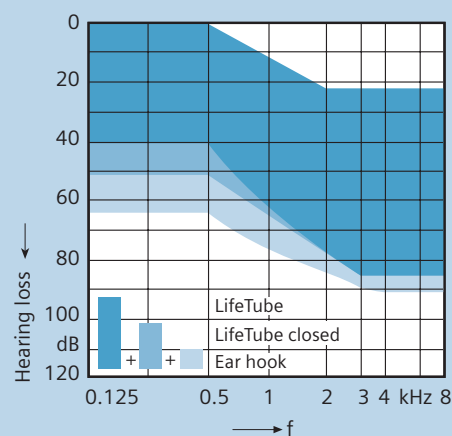


Premium Features

- Fully digital and programmable 12-channel BTE instrument
- For mild to moderate hearing losses, ski-slope hearing loss, and first-time wearers
- Very thin and inconspicuous LifeTube for right and left sides
- Programmable BTE instruments with e2e wireless™ and DataLearning™ technology
- Optimized solution for binaural fittings because of synchronized programs, volume and signal processing
- High performance, automatic and adaptive multichannel directional microphone
- Automatic and adaptive feedback cancellation
- Automatic situation detection including music detection
- Adaptive noise reduction and speech enhancement in 12 channels
- eWindScreen™, wind noise reduction system
- 4 individual hearing programs with optional ePocket™

Additional features

- Battery compartment with ON/OFF function
- Size 312 battery
- Alerting tones for low battery power
- Nanocoated housing



Options and Accessories

- Available in the following colors: beige, brown, grey, granite, silver, black, pearl white, transparent, and translucent fun colors: purple, green, blue, orange and pink
- ePocket remote control
- Life Fitting Set including LifeTubes, LifeTips and other fitting accessories
- Earhook

Technical Data

www.usa.siemens.com/hearing

SIEMENS

ARTIS 2 Life BTE Technical Data

		2cc coupler Standard ANSI S3.22-2003	
		Standard Earhook	LifeTube *
Output Sound Pressure Level	Peak	123 dB	123 dB
	HF-Average OSPL 90	120 dB	112 dB
Gain (Input 50 dB)	Peak	55 dB	45 dB
	HF-Average	46 dB	39 dB
	Reference test gain	43 dB	36 dB
Frequency Range	Low frequency limit	180 Hz	100 Hz
	High frequency limit	6100 Hz	5800 Hz
Total Harmonic Distortion	500 Hz	1%	1%
	800 Hz	1%	1%
	1600 Hz	2%	2%
Equivalent Input Noise		25 dB	25 dB
AGC-O (CK = -21 dB)	Attack time	5 ms	5 ms
	Release time	100 ms	100 ms
Battery	Type	312 cell zinc-air	312 cell zinc-air
	Battery current	0.8 mA	0.8 mA
	Battery life time	150 h	150 h

Technical information for e2e wireless function: Operating frequencies: $f_{low} = 115$ kHz, $f_{high} = 120$ kHz;
Rated H-field strength (maximum): $-11,5 \mu\text{A/m}$ at 3 meters.

*Measured with LifeTube 2.

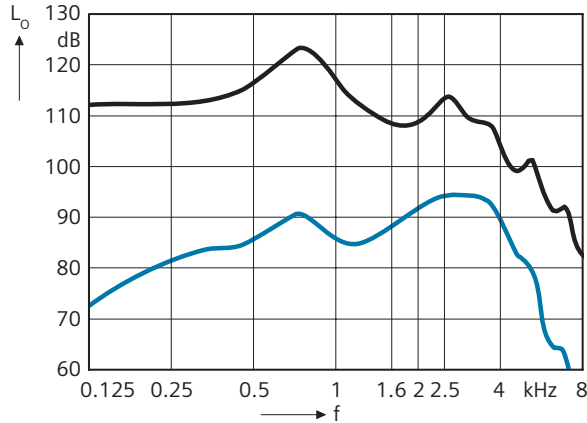
ARTIS 2 Life BTE Basic Data

Basic Data with LifeTube™

Output Sound Pressure Level ($L_i = 90$ dB)

Maximum Gain ($L_i = 50$ dB)

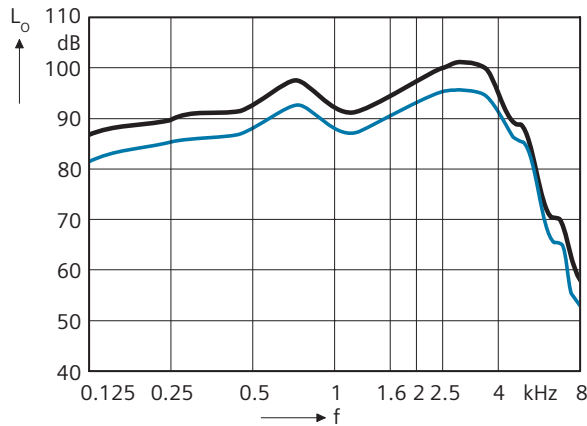
ANSI S3.22-2003



Frequency Response ($L_i = 60$ dB)

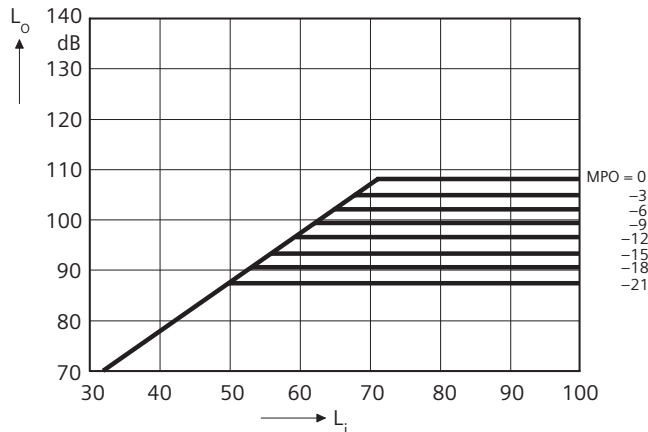
Basic Acoustic Response ($L_i = 60$ dB)

ANSI S3.22-2003



Effect of MPO (FOG, $f=2$ kHz)

ANSI S3.22-2003

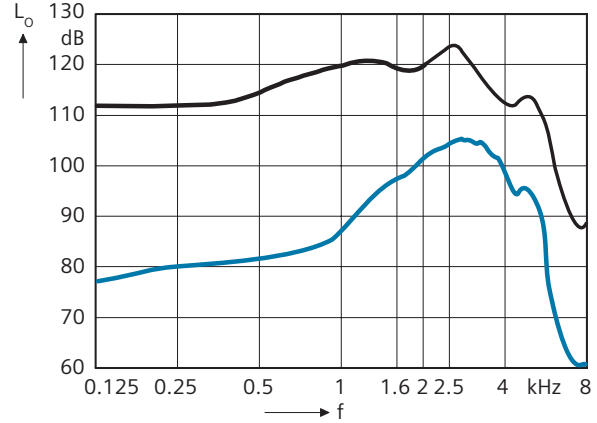


Basic Data w/Standard Earhook

Output Sound Pressure Level ($L_i = 90$ dB)

Maximum Gain ($L_i = 50$ dB)

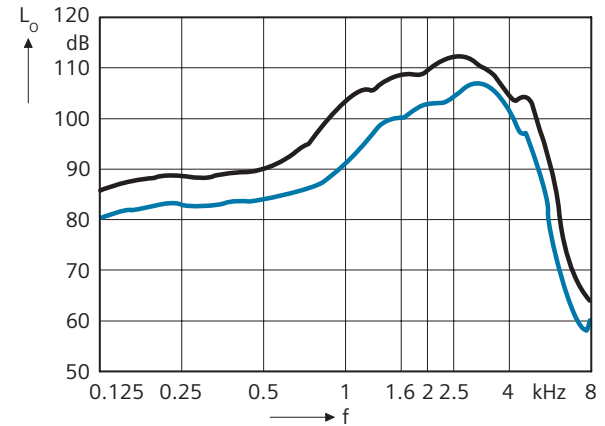
ANSI S3.22-2003



Frequency Response ($L_i = 60$ dB)

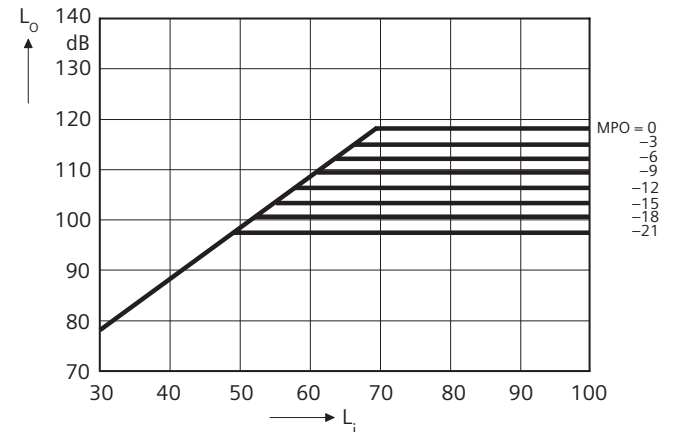
Basic Acoustic Response ($L_i = 60$ dB)

ANSI S3.22-2003



Effect of MPO (FOG, $f=2$ kHz)

ANSI S3.22-2003



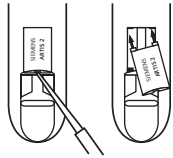
*Measured with LifeTube 2.

ARTIS 2 Life BTE Fitting Information



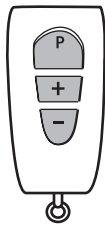
Programming Socket

The programming socket lies under a flap below the program button. Use a suitable tool to open the flap. After the programming procedure is complete, close the flap using your fingernail.



Changing the Typeplates

To mark the left and right side of the ARTIS 2 Life instruments when fitting binaurally, exchange the housing colored typeplates on the inner curve of the instruments for blue (left) and red (right). Use a suitable tool to lift and remove the typeplate. Lock the two pins on the new typeplate into the openings and press gently into position with your finger.



ePocket™

The ARTIS 2 hearing system supports the use of ePocket™, a bi-directional remote control with read out function.

ePocket can change the hearing programs and the volume of ARTIS 2. The ePocket read out function will display the current program, volume level and battery status of the instrument(s).

ePocket includes a cover and clip.

Life Fitting Set

The Life Fitting Set includes parts and special tools necessary for fitting ARTIS 2 Life in a convenient carrying case. Refills for all parts are available through Siemens.

Siemens Hearing Instruments, Inc. locations

United States Headquarters/Northeast Manufacturing Facility:

10 Constitution Avenue, P.O. Box 1397, Piscataway, NJ 08855-1397 • (732) 562-6600 or (800) 766-4500

Midwest Sales Facility: (847) 808-1200 or (800) 333-9083

West Manufacturing Facility: (562) 404-4531 or (800) 998-9787

Technical Support for Software and Systems: (888) 231-1333

www.usa.siemens.com/hearing

Siemens Hearing Instruments

A Division of Siemens Canada Limited

320 Pinebush Road, Cambridge, Ontario, Canada N1T 1Z6 • (519) 622-5200 or (800) 663-0620

www.siemens.ca/hearing

Information in this brochure subject to change without notice. © 2007 Siemens Hearing Instruments, Inc. All rights reserved